

LowPro-Series

Low Profile Sewage Systems

Liberty Pumps®

A Family and Employee Owned Company

For addition of a toilet without breaking concrete floors. Mounts freestanding or can be built-in using 2" x 6" joists for a more professional looking installation. Additional fixtures such as a shower or sink can be easily added using the optional inlet seal (provided).

Fully
Assembled
System!



LowPro41LP



Features

- Durable poly tank with separate access opening to switch
- Fully assembled unit, including pump, piping and switch. Saves valuable installation time.



(Toilet not included)



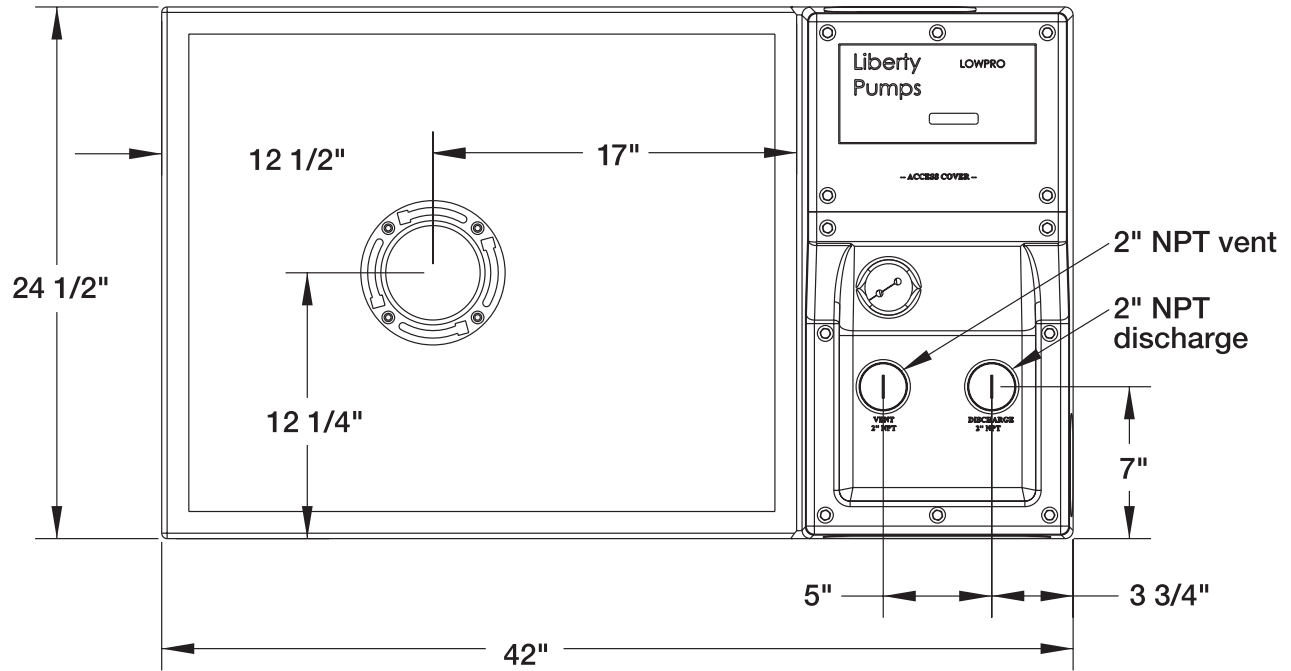
Constructed with Certified LE-Series Pumps

innovate. evolve.

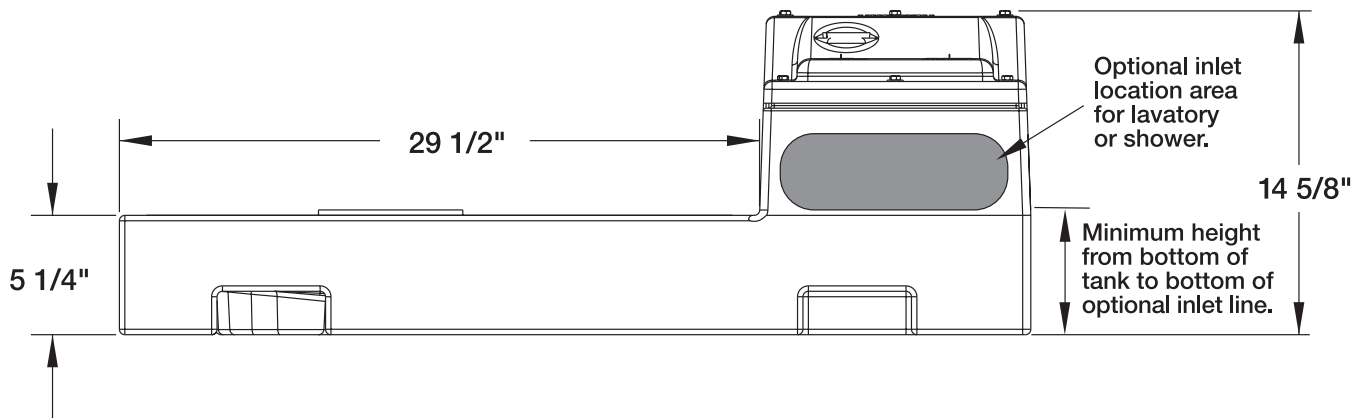
LowPro-Series

Dimensional Data

Top View



Side View



LowPro-Series

Fully Assembled System Features

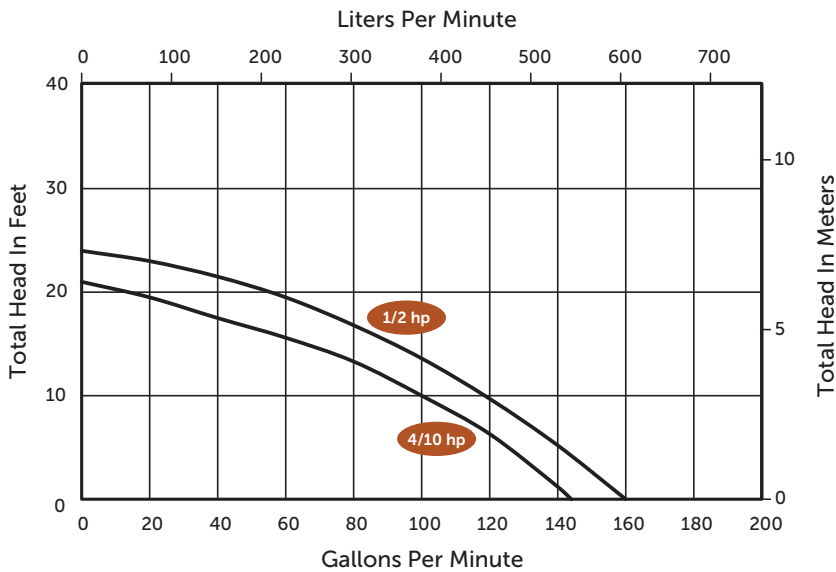
- Durable one-piece poly tank with split cover design – allows access to switch area without disturbing discharge and vent piping
- Pre-mounted float switch
- Schedule 80 PVC discharge pipe (internal)
- 2" check valve
- Closet flange with extra spacers for optional floor heights (1/4" and 1/2" provided)
- Pipe grommet seal for additional 2" inlet pipe from a shower or sink
- Engineered water jet provides a powerful spray within the tank to help break down solids and reduce potential jamming
- Flow-adjusted pump maximizes pump cycle time and increases pump life

Max Fluid Temperature

Maximum fluid temperature: 140°F (60°C)

Performance Curve

60 Hz 1725 RPM



Models

MODEL	HP	VOLTS	AMPS	SOLIDS HANDLING	WEIGHT IN LBS
LowPro41LP	4/10	115	12	2"	91
LowPro51LP	1/2	115	12	2"	90
LowPro52LP	1/2	230	6.8	2"	90

LowPro-Series

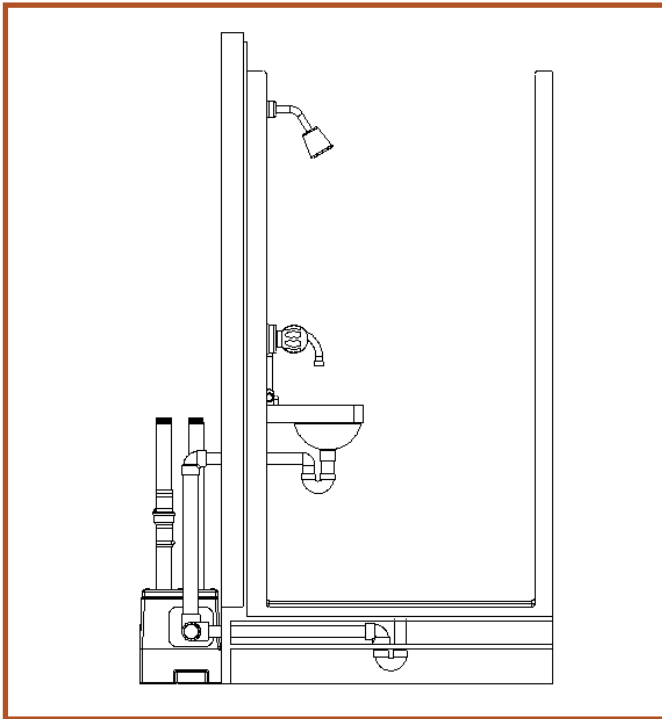
Sample Installations

The LowPro41LP can be installed freestanding or built-in, concealing the pump compartment and piping. The platform section of the tank is sized to fit flush with an elevated floor framed with 2" x 6" material.

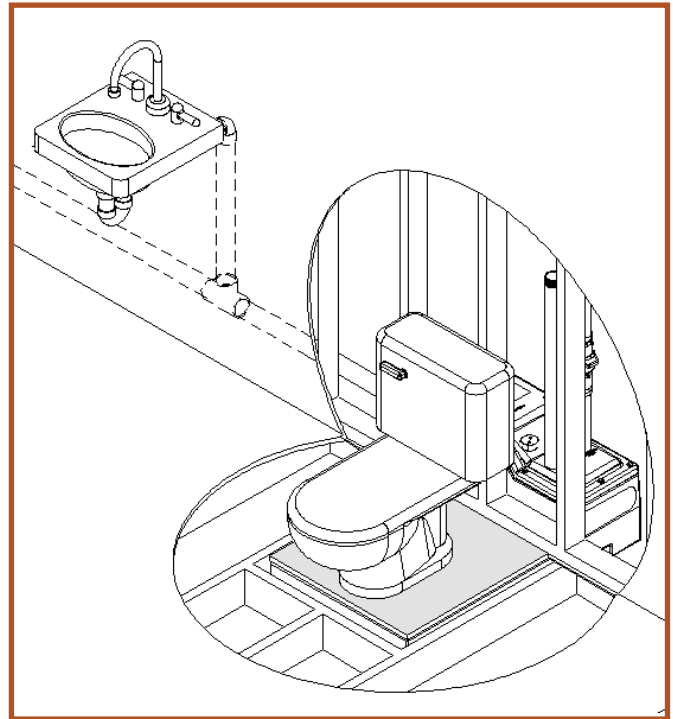
Note: Access to pump compartment is required on built-in installations.

For addition of a lavatory or shower, a rubber pipe seal is included. Seal accepts 2" Schedule 40 PVC piping. Showers must be elevated to allow gravity flow to unit.

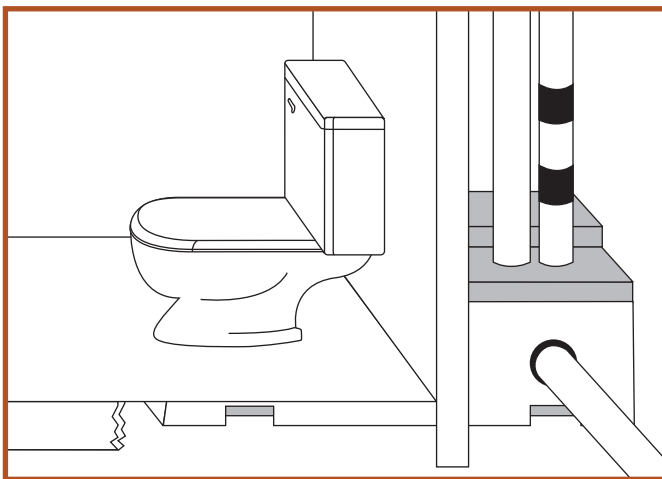
Some possible arrangements using the LowPro41LP:



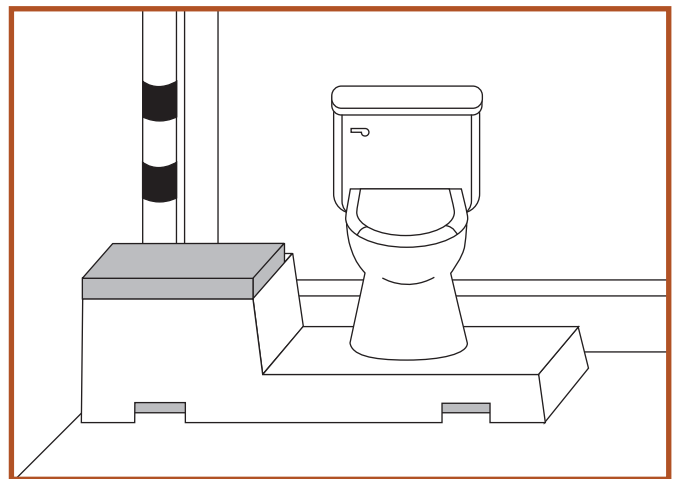
Side view with shower and lavatory.



View with wall and floor framing.



Built-in [hidden]



Exposed corner location